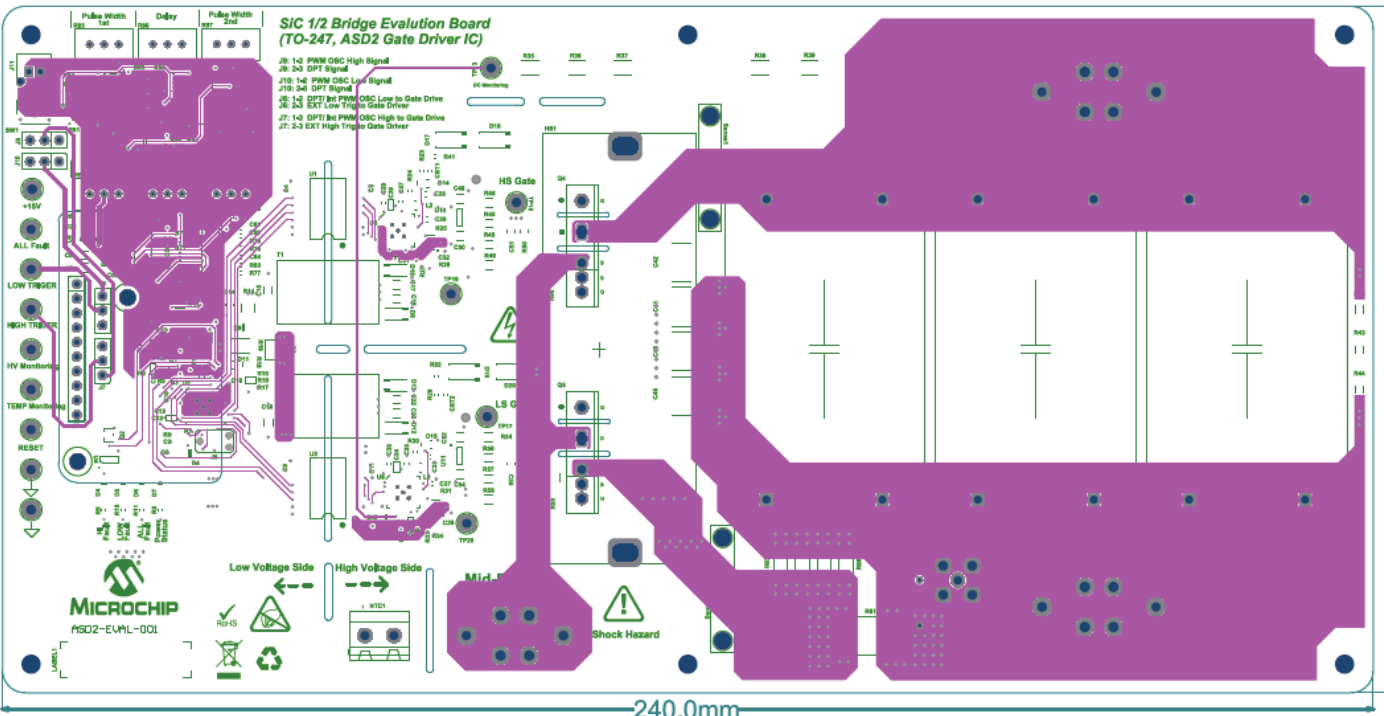
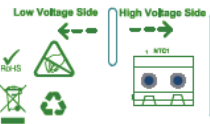


**SIC 1/2 Bridge Evolution Board  
(TO-247, ASD2 Gate Driver IC)**

- J6: 1-2 PWM OSC High Signal
- J6: 2-3 DPT Signal
- J19: 1-4 PWM OSC Low Signal
- J19: 3-4 DPT Signal
- J5: 1-2 DPT In PWM OSC Low to Gate Drive
- J6: 2-3 EXT Low Trig to Gate Drive
- J7: 1-2 DPT In PWM OSC High to Gate Drive
- J7: 2-3 EXT High Trig to Gate Drive



**MICROCHIP**  
ASD2-EVAL-001



240.0mm

120.0mm