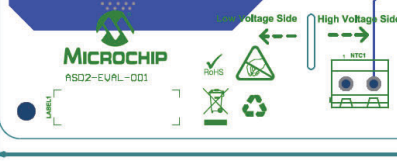
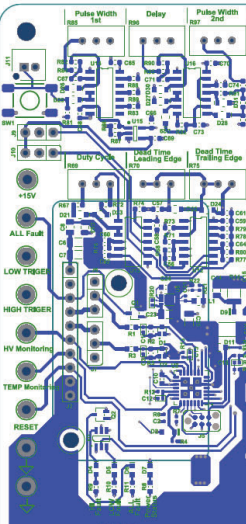
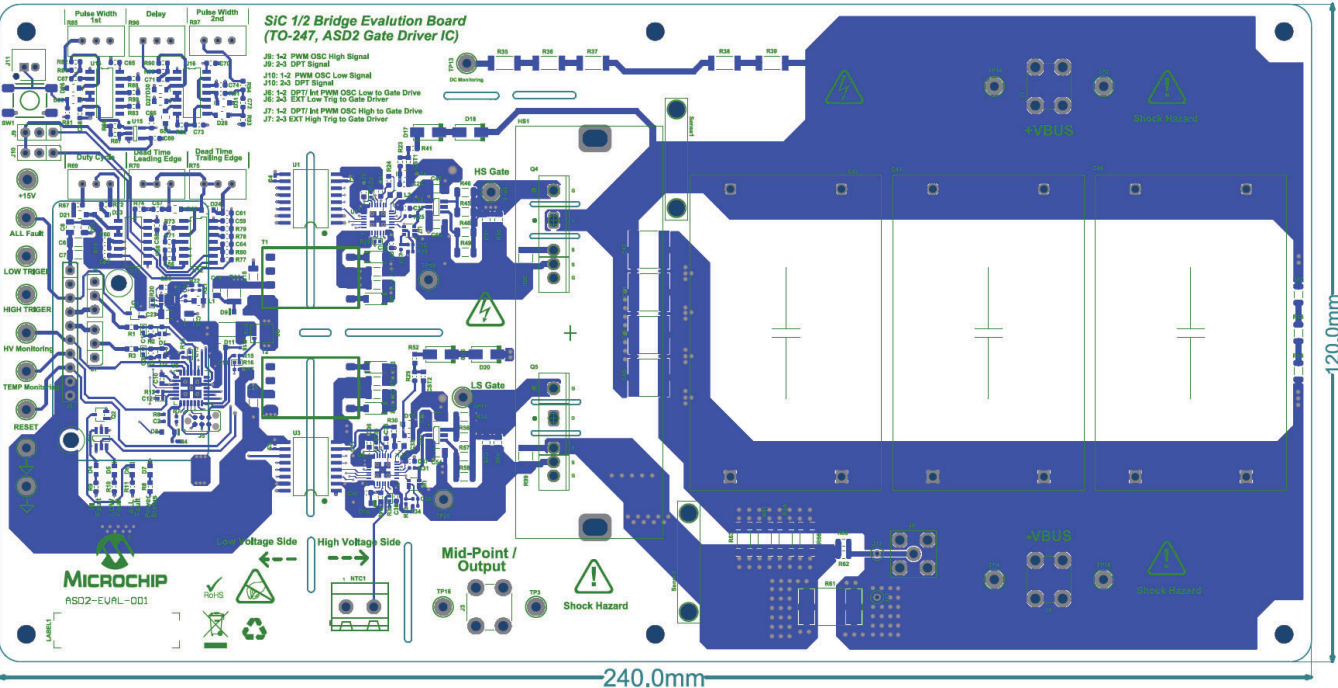


**SIC 1/2 Bridge Evolution Board
(TO-247, ASD2 Gate Driver IC)**

- J8: 1-2 PWM OSC High Signal
- J8: 3-3 DPT Signal
- J10: 1-2 PWM OSC Low Signal
- J10: 2-3 DPT Signal
- J6: 1-2 DPT Int PWM OSC Low to Gate Drive
- J6: 2-3 EXT Low Trig to Gate Drive
- J7: 1-2 DPT Int PWM OSC High to Gate Drive
- J7: 2-3 EXT High Trig to Gate Drive



240.0mm

120.0mm