

PIO_IFCSR = 0

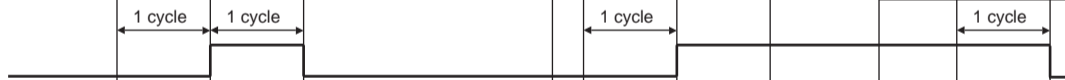
Peripheral clock



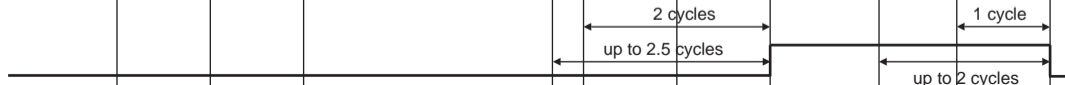
Pin Level



PIO_PDSR
if PIO_IFSR = 0



PIO_PDSR
if PIO_IFSR = 1



up to 1.5 cycles

1 cycle

2 cycles

up to 2.5 cycles

up to 2 cycles

1 cycle

1 cycle

1 cycle

1 cycle