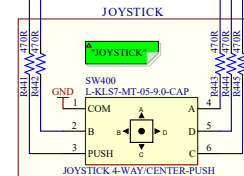
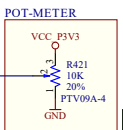
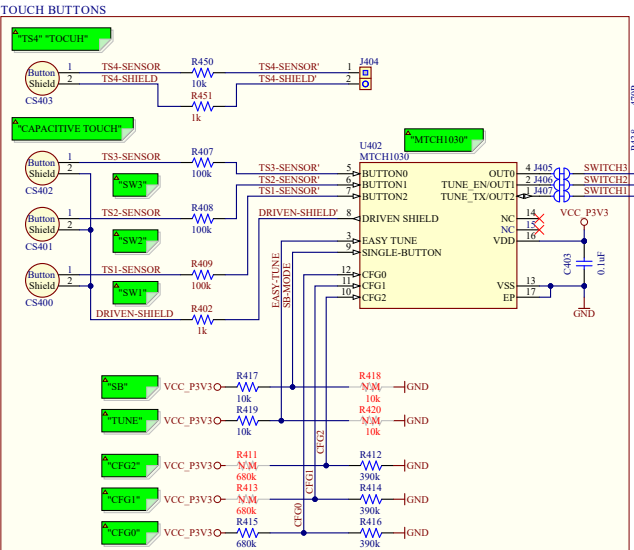
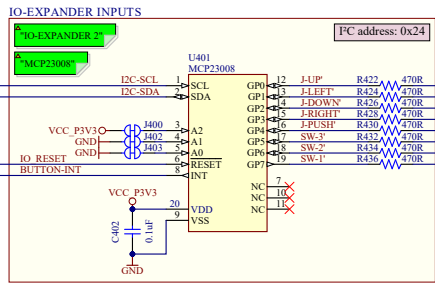
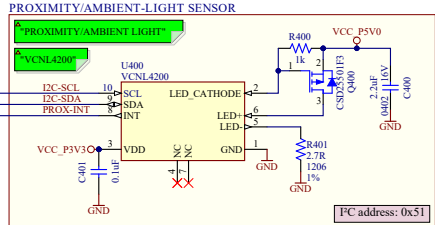
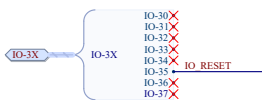
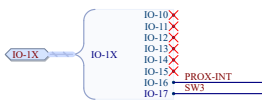
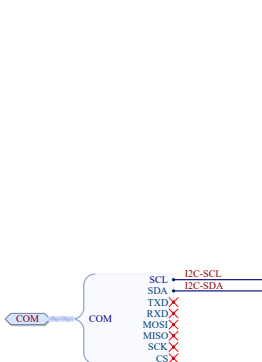
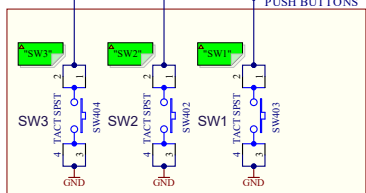
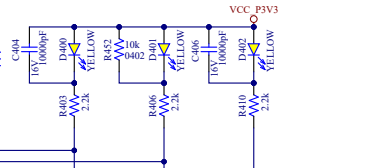


HMI Inputs



DESIGN NOTE
SW2 has a pull-up on the board.
All other joystick/switch signals do not have pull-ups on the board. Pull-ups must be enabled in the Curiosity Nano MCU or the IO-Expander.



Project Owner: AH
 PCB Layout Contact: TF, VL
 PartNumber: EV58G97A
 Project Title: Curiosity Nano Explorer
 Variant: Default Assembly

Sheet Title: HMI Inputs
 Size: A3
 Date: 06.03.2024
 Rev: 2
 Sheet 6 of 9

Designed with Altium Altium.com

File: Curiosity_Nano_Explorer_HMI_Inputs_SchDoc