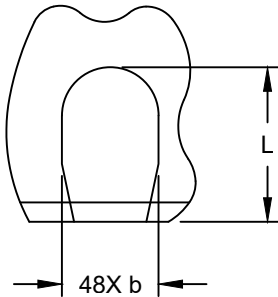
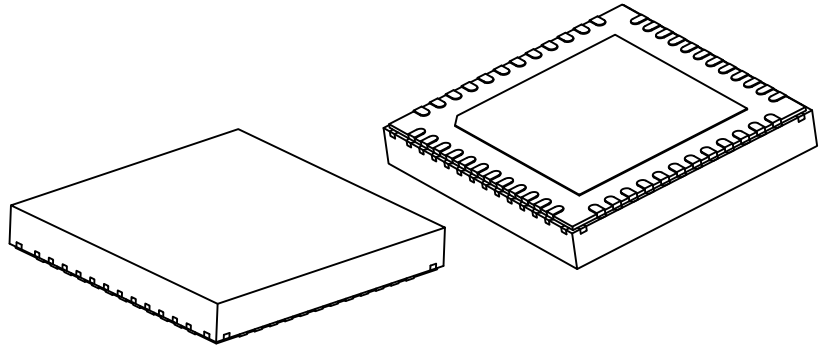


# 48-Lead Very Thin Plastic Quad Flat, No Lead Package (ZWX) - 6x6x1 mm Body [VQFN] With 4.20 mm Exposed Pad and Stepped Wettable Flanks

**Note:** For the most current package drawings, please see the Microchip Packaging Specification located at <http://www.microchip.com/packaging>



**DETAIL B**  
ALTERNATE TERMINAL  
CONFIGURATION



Units		MILLIMETERS		
Dimension Limits		MIN	NOM	MAX
Number of Terminals	N	48		
Pitch	e	0.40 BSC		
Overall Height	A	0.80	0.90	1.00
Standoff	A1	0.00	0.02	0.05
Terminal Thickness	A3	0.203 REF		
Overall Length	D	6.00 BSC		
Exposed Pad Length	D2	4.10	4.20	4.30
Overall Width	E	6.00 BSC		
Exposed Pad Width	E2	4.10	4.20	4.30
Terminal Width	b	0.15	0.20	0.25
Terminal Length	L	0.35	0.40	0.45
Terminal-to-Exposed-Pad	K	0.50 REF		
Wettable Flank Step Cut Length	D3	-	-	0.085
Wettable Flank Step Cut Height	A4	0.10	-	0.19

## Notes:

1. The Pin 1 visual index feature may vary, but it must be located within the hatched area.
2. The package is saw singulated.
3. Dimensioning and tolerancing per ASME Y14.5M
  - BSC: Basic Dimension. Theoretically exact value shown without tolerances.
  - REF: Reference Dimension, usually without tolerance, for information purposes only.