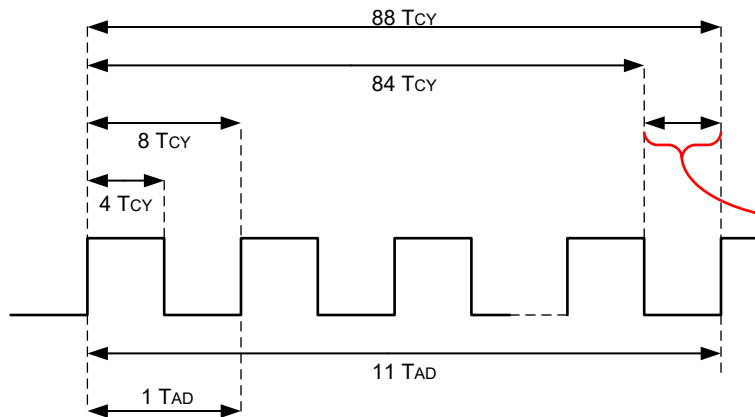


$F_{osc} = 32 \text{ MHz}$

$T_{CY} = 4/32 \text{ MHz} = 125 \text{ ns}$

$T_{AD} = 1 \mu\text{s}$, $ADCS = F_{osc}/32$



Stop the A/D conversion
between 10.5 and 11 T_{AD}
cycles.

See the ADC Timing
diagram in the ADC chapter
of the data sheet.

See the '**ADC Clock Period (T_{AD}) vs Device Operating Frequency**' table in the ADC section of the data sheet.