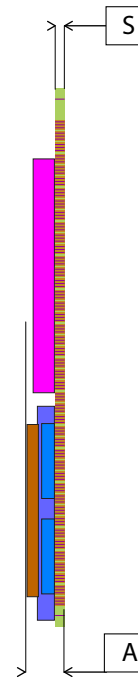
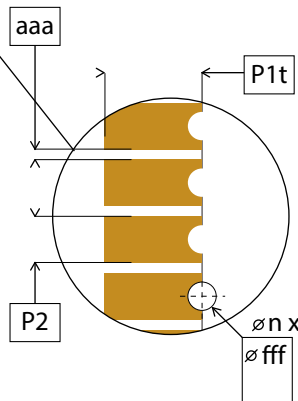
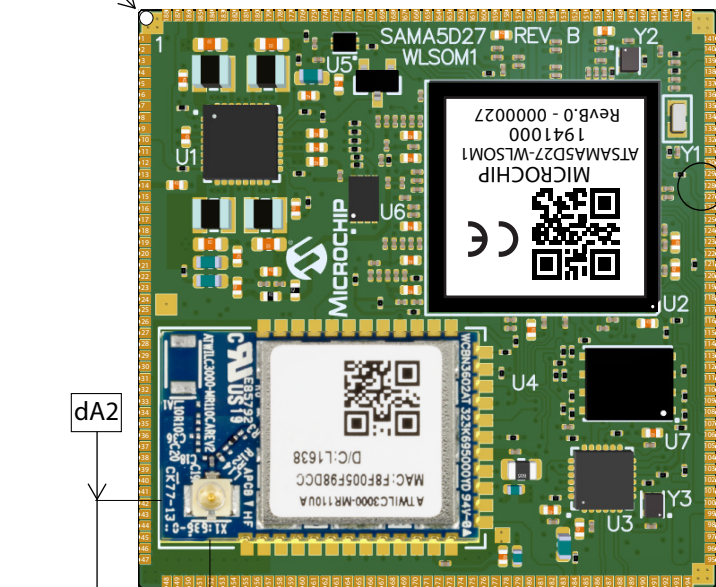
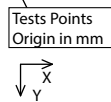
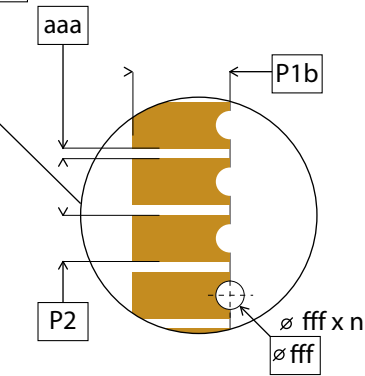
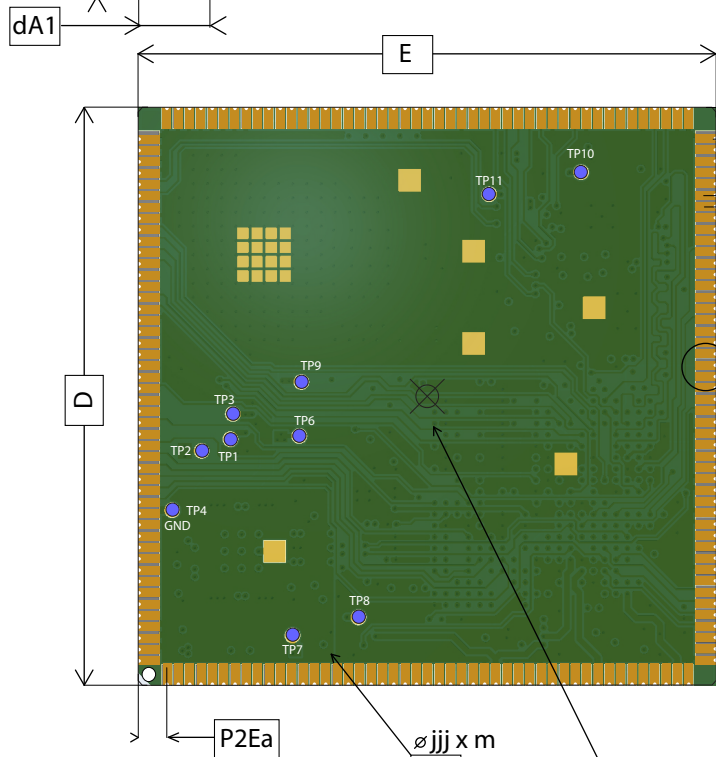


PIN 1 CORNER

TOP VIEW



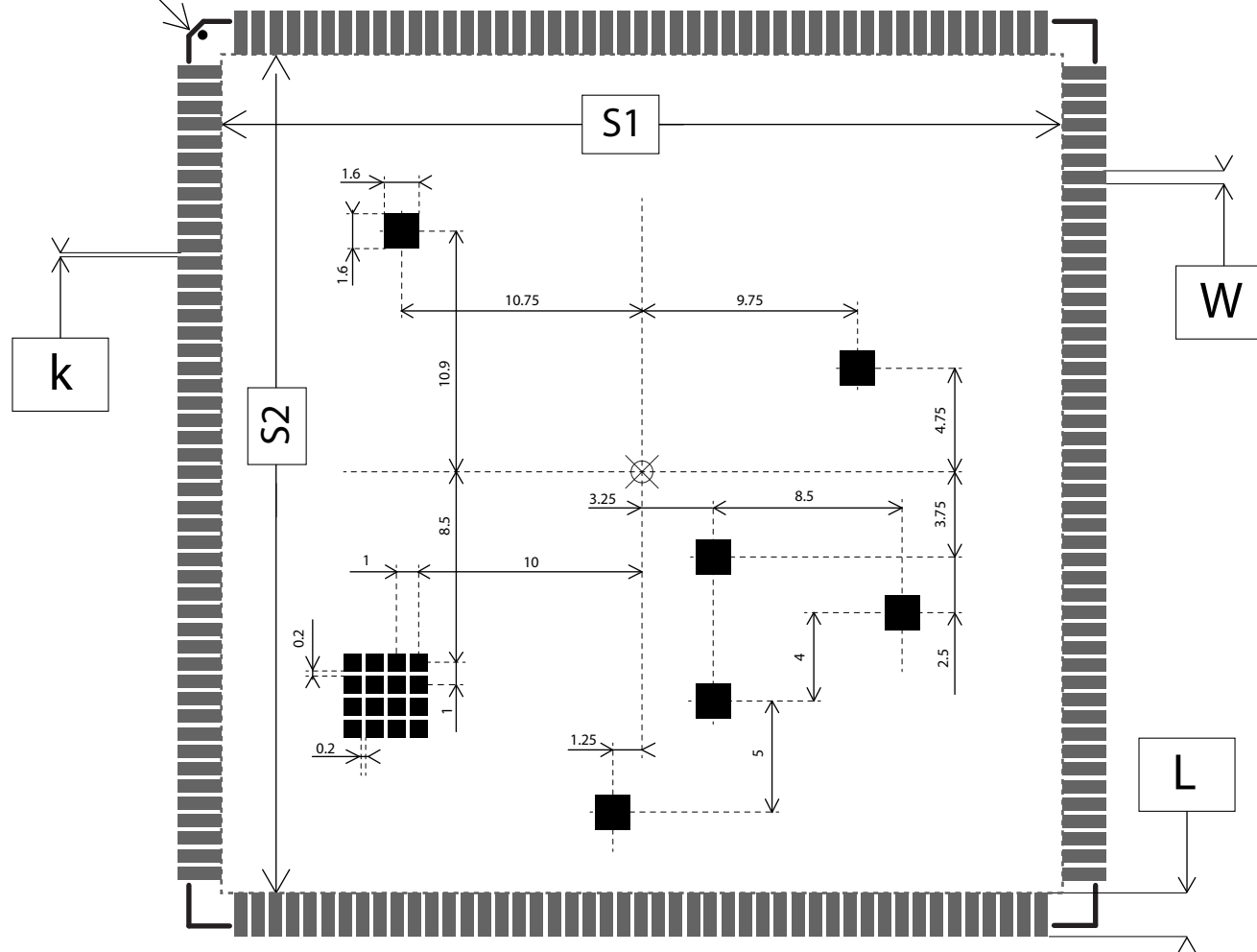
BOTTOM VIEW



TITLE	SAMA5D27-WLSOM1 DIMENSIONS			Drawn by : R C R
Pads :	188		Drawing No.:	SAMA5D27-WLSOM1_POD
Body :	40.8 x 40.8 x 3.287	mm	REV.:	B02
			Date:	12/28/2022
Pads Pitch :	0.8	mm		

# LAND PATTERN RECOMMENDATIONS

PIN 1 CORNER



Inside <S1-S2> square, keepout area only the following elements are allowed:

- Ground vias
- Ground copper
- Power planes



TITLE	SAMA5D27-WLSOM1 DIMENSIONS			Drawn by : R C R
Pads :	188		Drawing No.:	SAMA5D27-WLSOM1_POD
Body :	40.8 x 40.8 x 3.287	mm	REV.:	B02
			Date:	12/28/2022
Pads Pitch :	0.8	mm		

		Symbol	Common Dimensions			Comments
			Min.	Typ.	Max.	
Package:		--	--	--	--	Castellated
Body Size	X	E	40.700	40.800	40.900	
	Y	D	40.700	40.800	40.900	
Pad Pitch:		e	--	0.800	--	
PCB Thickness:		S	1.150	1.200	1.250	
Total Thickness:		A	--	3.287	3.387	
Pad Length: (Top Side) *		P1t	--	0.800	--	
Pad Length: (Bottom Side) *		P1b	--	1.500	--	
Pad Width: *		P2	--	0.600	--	Solder Mask Defined 0.550
Pad Space: *		aaa	--	0.200	--	
Opening Drilling Diameter:		fff	--	0.400	--	0.400 typic minus metallization
Test Point Diameter:		jjj	--	1.000	--	
Test Point Count:		m	--	10	--	
Pad Count:		n	--	188	--	
Land Pattern Pad Width:		W	--	0.600	--	Solder Mask Defined 0.550
Land Pattern Pad Length:		L	--	2.000	--	
Land Pattern Pad X Space:		S1	--	37.800	--	
Land Pattern Pad Y Space:		S2	--	37.800	--	
Land Pattern Pad Space:		k	--	0.200	--	
Pad Axis to Edge: *	X	P2Ea	--	2.000	--	--
	Y	P2Eb	--	2.000	--	--
U.FL Antenna Axis to Edge:	X	dA1	--	5.011	--	--
	Y	dA2	--	6.161	--	--

Test Points Position compared to Center Origin							
Test Point Number	X (mm)	Y (mm)	Voltage Point	Test Point Number	X(mm)	Y(mm)	Voltage Point
TP1	-13.875	3.000	VDDUTMII	TP7	-9.500	16.825	VDDCORE
TP2	-15.900	3.825	VDD_3V3	TP8	-4.850	15.550	VDDPLLA
TP3	-13.700	1.225	VDDOSC_PLL	TP9	-8.875	-1.025	VLDO1
TP4	-17.975	8.000	GND	TP10	10.825	-15.800	VDDA_3V3
TP6	-9.025	2.775	VDDIODDR	TP11	4.350	-14.250	VBAT

\* Tolerances are defined upon:  
- IPC A600 - Class 2  
- IPC 2615



TITLE		SAMA5D27-WLSOM1 DIMENSIONS		Drawn by : R C R	
Pads :	188	Drawing No.:	SAMA5D27-WLSOM1_POD		
Body :	40.8 x 40.8 x 3.287 mm	REV.:	B02		
		Date:	12/28/2022		
Pads Pitch :	0.8 mm				