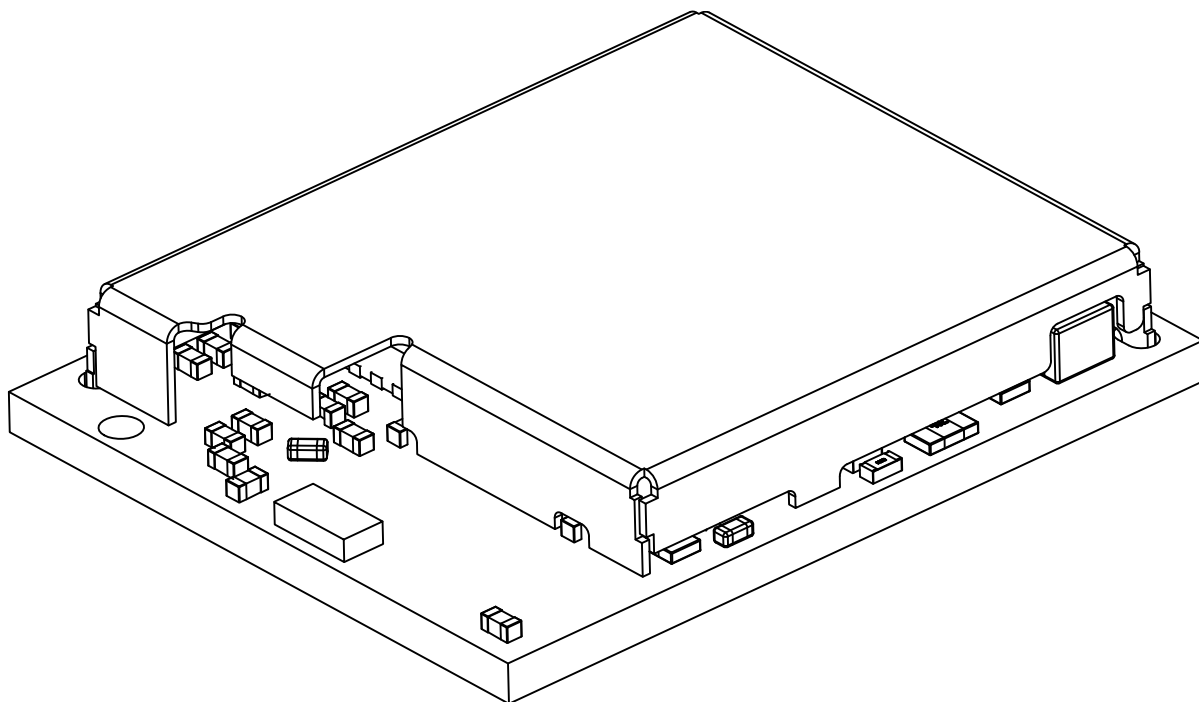


50-Lead Printed Circuit Board Module (9MW) 11.5x14.3x2.6mm [MODULE]

Note: For the most current package drawings, please see the Microchip Packaging Specification located at <http://www.microchip.com/packaging>



Dimension Limits	Units	MILLIMETERS		
		MIN	NOM	MAX
Number of Terminals	N	46		
Pitch	e	0.80 BSC		
Overall Height	A	2.45	2.60	2.75
PCB Thickness	A2	0.70	0.80	0.90
Shield Height	A3	1.65	1.70	1.75
Overall Length	D	11.40	11.50	11.60
Overall Width	E	14.20	14.30	14.40
Shield Length	D1	10.35	10.40	10.45
Shield Width	E1	12.60	12.65	12.70
Terminal Width	b	0.32	0.40	0.48
Terminal Length	L	0.32	0.40	0.48

Notes:

1. The Pin 1 visual index feature may vary, but it must be located within the hatched area.
2. The package is saw singulated.
3. Dimensioning and tolerancing per ASME Y14.5M
BSC: Basic Dimension. The theoretically exact value is shown without tolerances.
REF: Reference Dimension, usually without tolerance, is for information purposes only.