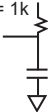


Test Point
for tristate

$R = 1k$



R to V_{CCI} for t_{plz} / t_{pzi}

R to GND for t_{phz} / t_{pzh}

35 pF for t_{pzi} / t_{pzh}

5 pF for t_{phz} / t_{plz}

Test point for data

$R = 25$



R to V_{CCI} for t_{pl}

R to GND for t_{ph}

10 pF

GND